

# 2014-2015 Financial Reporting

*“At the end of the day, the most overwhelming key to a child’s success is the positive involvement of parents” – Jane D. Hull*

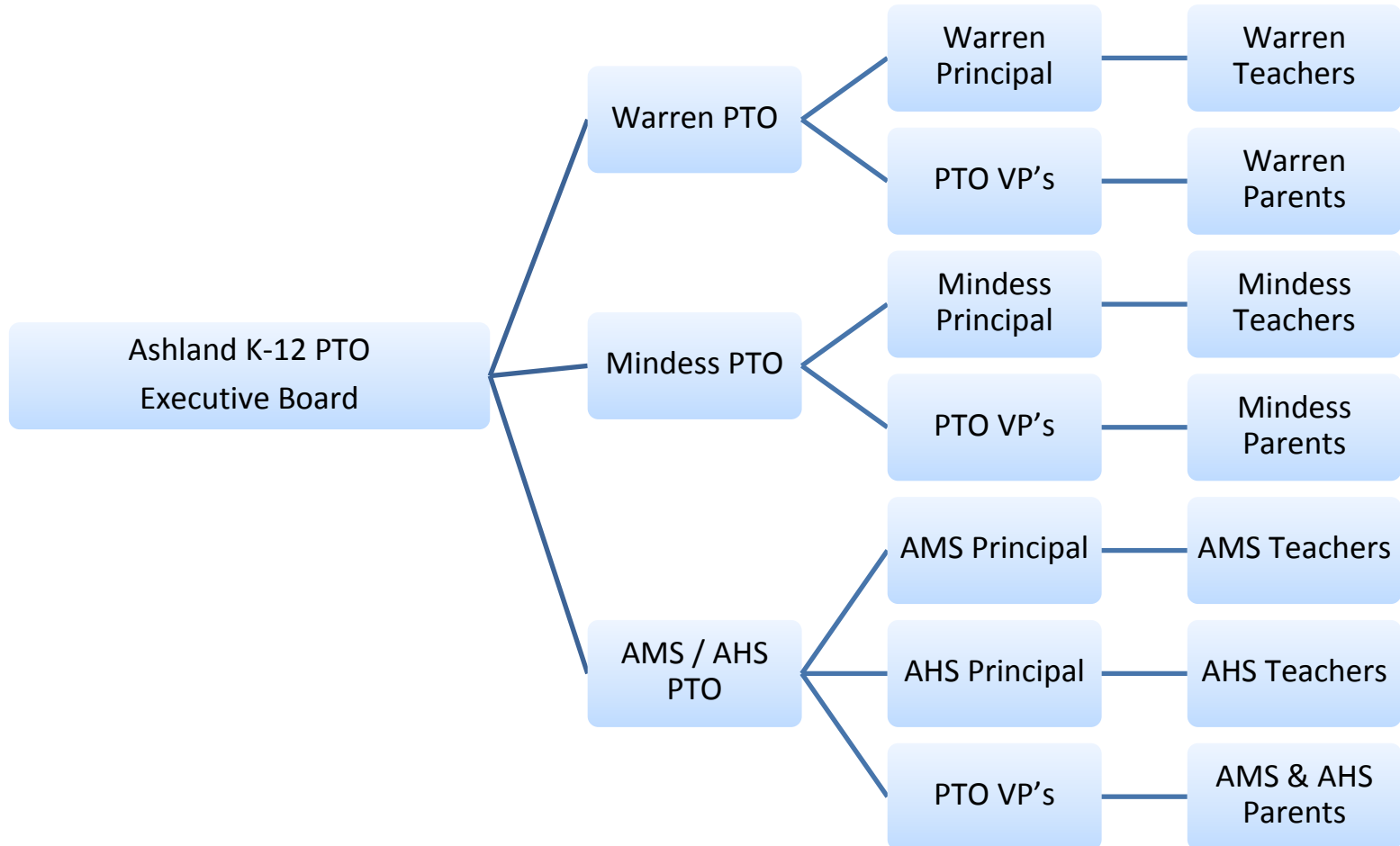
# Our Vision For 2014-2015

---



- Increased collaboration between principals, teachers, and parents.
- Decrease the intimidation of a K-12 PTO therefore increasing the number of parents involved.
- Rebuilding bridges between PTO and administration.

# How did we accomplish this?



# How did we do?



- Ashland K-12 PTO still oversaw the overall funding and operations
- Warren School, Mindess School, and AMS/AHS were divided into sub-PTO's during the 2<sup>nd</sup> half of the year
- Meetings were held at individual schools where PTO VPs collaborated with principals to run meetings with the goal of increasing parent participation which happend
- Allowed Principals and VPs ownership to determine what funds were needed for non-enrichment needs.

# Where are we now?

---

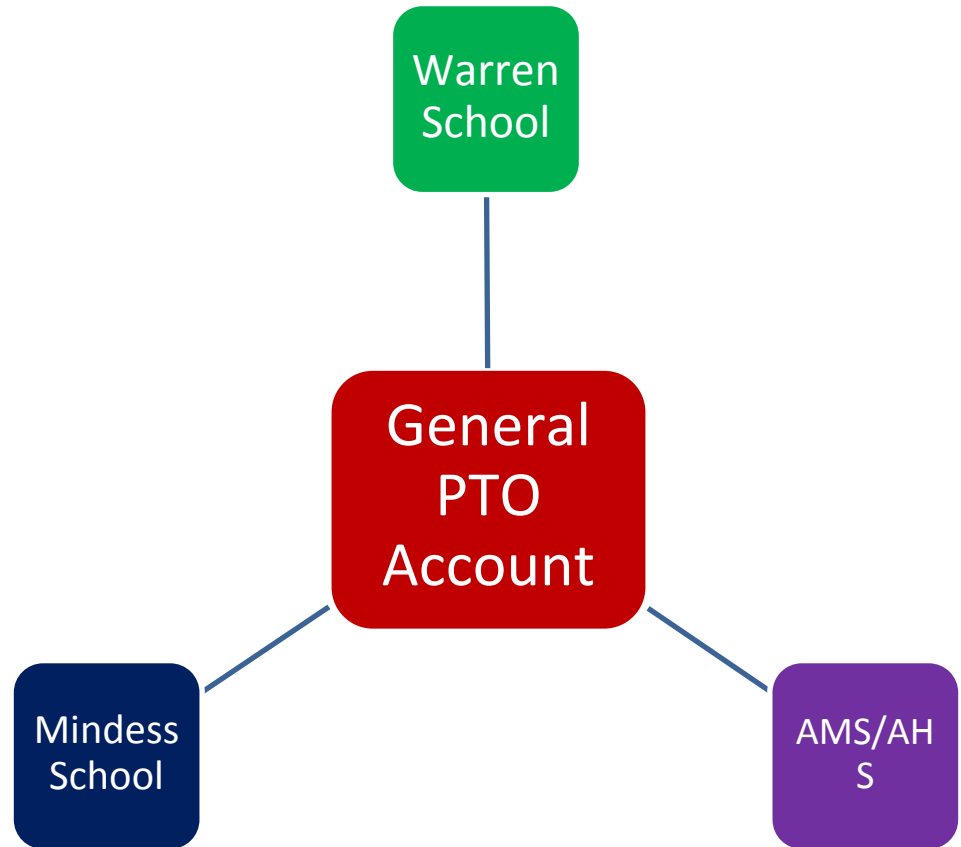


- Using 2014 – 2015 numbers every school raised enough (with the General fund contribution) to cover their Enrichment Budget and have additional funds
- More dedicated school fundraising created more parental involvement
- Smaller meetings helped
- More funding to give back to the schools and our children

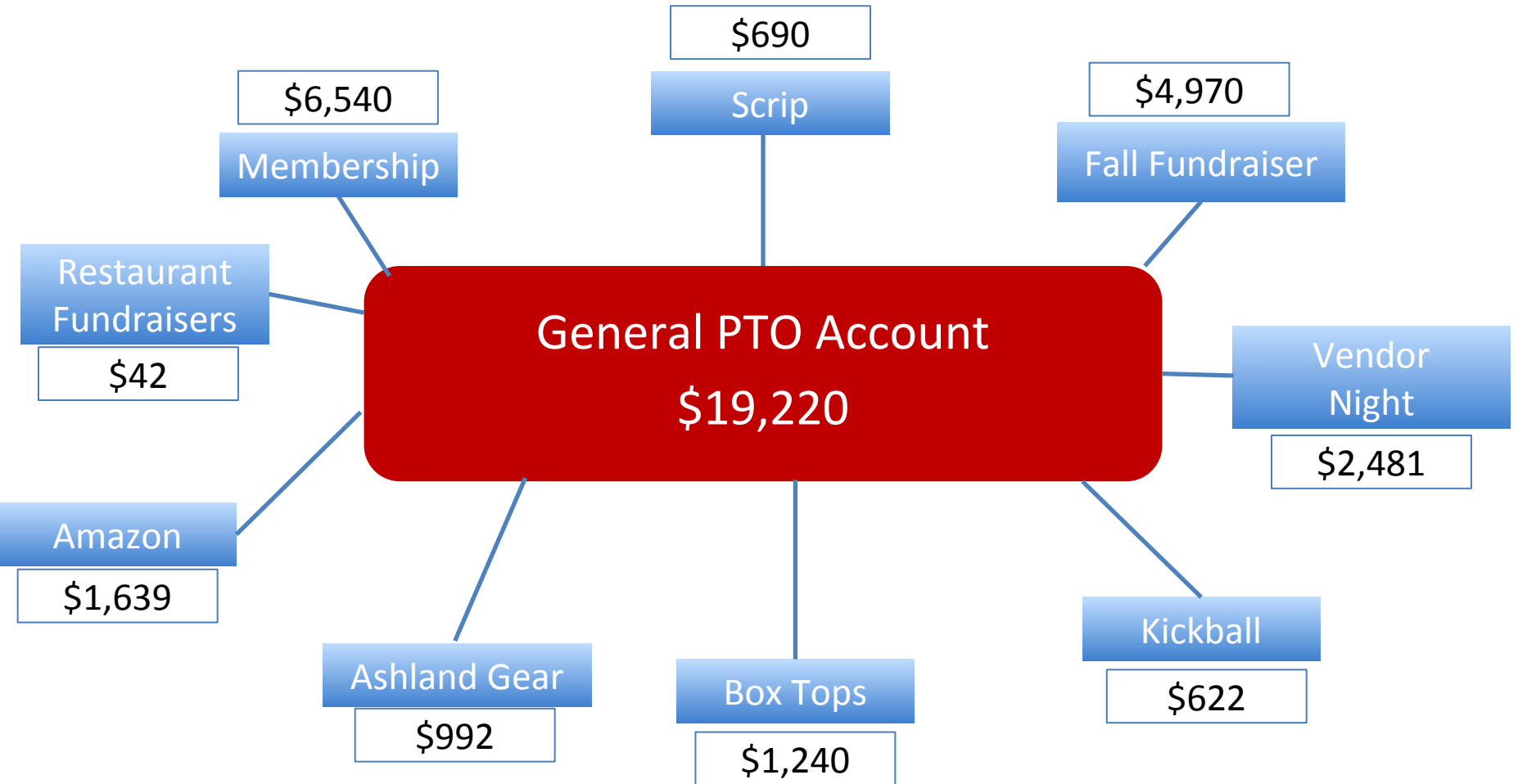
# Proposed Finances:



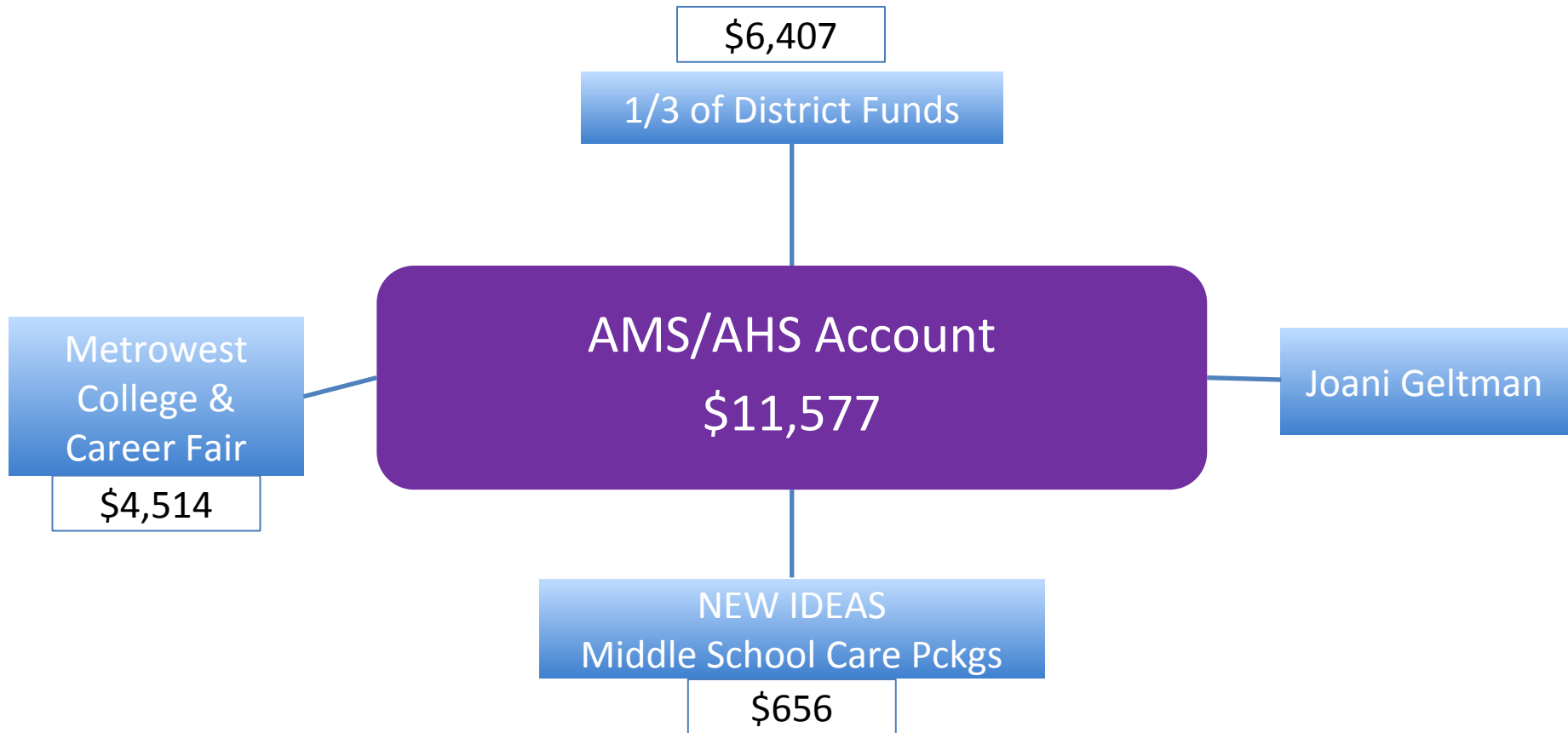
- General PTO account is divided equally amount the 3 PTOs. Fees and expenses are paid out of this account.
- Fundraisers that target a given school go back into that schools PTO budget.
- Money remaining after Enrichments are allocated is given out as grants to the teachers and staff of that school. Grant money is determined by Principals and PTO VPs.



# Proposed Financial Breakdown

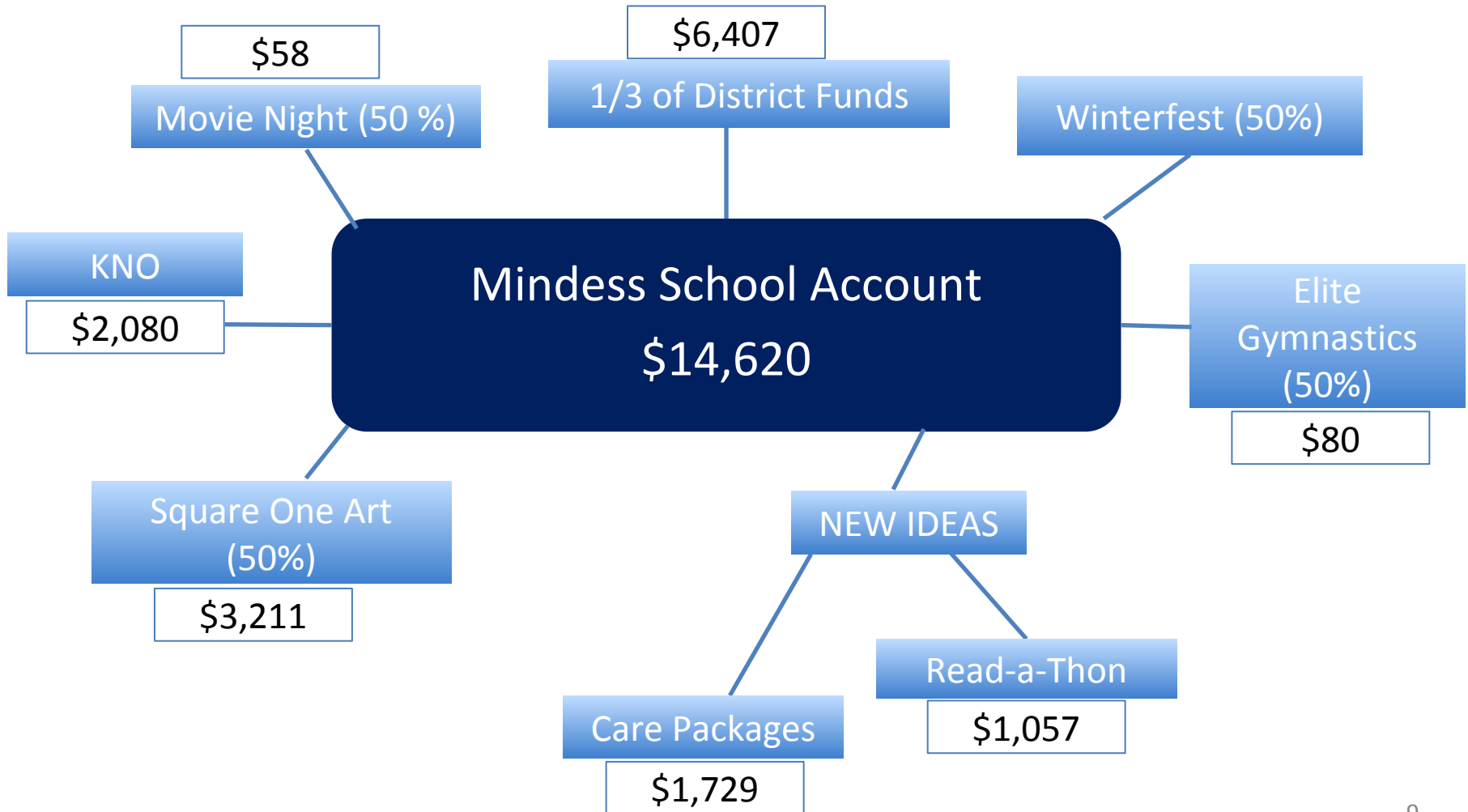


# Proposed Financial Breakdown





# Proposed Financial Breakdown



# Proposed Financial Breakdown

